



JANUARY



Miss Taahtyana's Classroom Newsletter 1/20 – 1/31

NEWSLETTER

Our Focus

- Lunar New Year
- Snowmen
- Changes of Winter
- Fine Motor (3 finger grip)
- Sequencing
- Cutting
- Independent Writing
- Addition

Letters: Mm & Nn

Number: 9 & 10

Activities related to

Literature and Theme

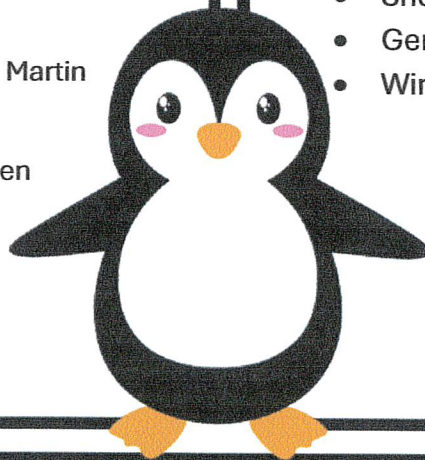
- Letter and Number Worksheets
- Mm is for Mouse
- Nn is for Noodles
- Lunar New Year crafts
- Snowmen themed crafts
- Cutting Practice
- Name Tracing
- Winter Crafts
- Snow Exploration
- Germ Experiment
- Winter Math

Special Dates

Monday Jan 20th- School closed Martin Luther King Day

Wednesday Jan 29th- School Open Lunar New Year

Show & Tell EVERY Wednesday



Parent Info

- Remember to label ALL jackets and accessories. (Mittens preferred unless student is able to put on gloves independently)
- Please send your child to school with something that begins with the letter of the week each Wednesday for show and tell. (Jan 22, Mm – Jan 29. Nn)
- Remember to empty and return folders daily
- Remember to sign out with accurate time and date daily
- Please provide 1-2 packs of wipes and weather appropriate change of clothes

